

INFANTRY DRILL REGULATIONS

August 4, 1941

SECTION VI

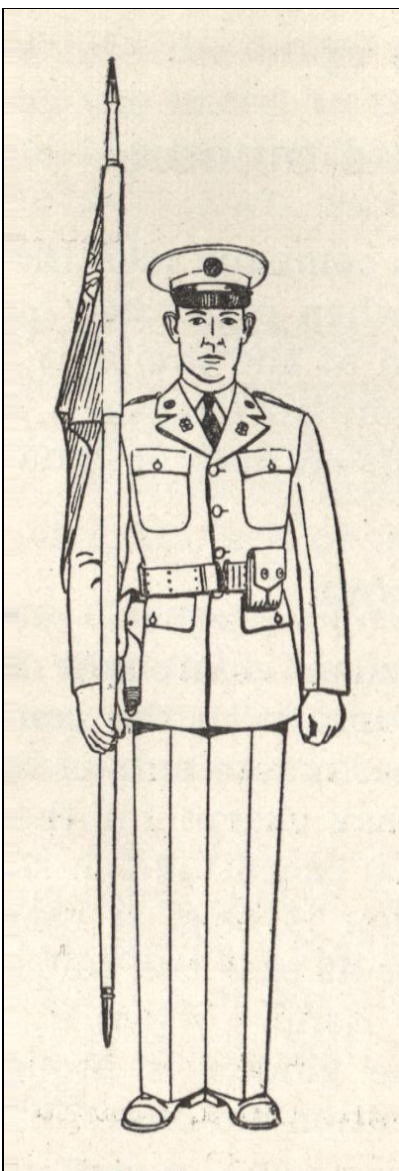
MANUAL OF THE GUIDON

83. GENERAL. - The guidon is a company identification flag. It is carried at ceremonies and when prescribed by the commander. In camp it is displayed at the company headquarters. In combat it is with the company baggage. The guidon bearer is a specially selected enlisted man designated by the company commander.

DISMOUNTED

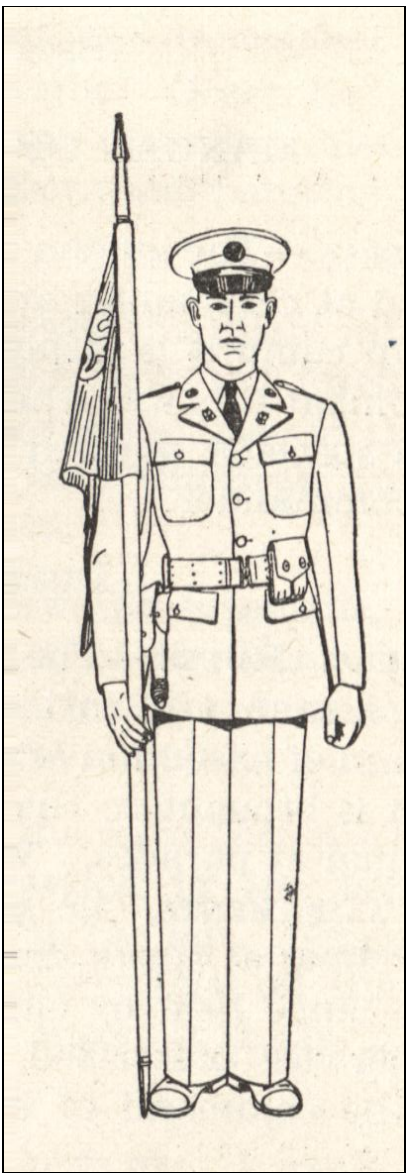
84. GENERAL RULES. - The guidon is brought to *PRESENT ARMS*, *PARADE REST*, and to the *ORDER* with the company. At the command of execution of other movements of the manual, the guidon is brought to the *CARRY* except for the execution of the manual at parades. When executing the *FACINGS*, *SIDE STEP*, and *ALINEMENTS*, the guidon is held at *CARRY GUIDON*. When marching at *ROUTE STEP* or at ease the guidon is at the *CARRY*, the lance held by either hand. When at the *ORDER*, unless otherwise prescribed, the guidon is brought to the *CARRY* at the command of execution for marching in quick time.

85. CARRY GUIDON. - The lance of the guidon is held vertically in the right hand, resting in the hollow formed by the thumb and first finger, back of the hand to the right, arm extending downward, lance resting in the hollow of the shoulder, ferrule 6 inches from the ground as shown in figure below. The *CARRY* is the habitual position when troops are marching.

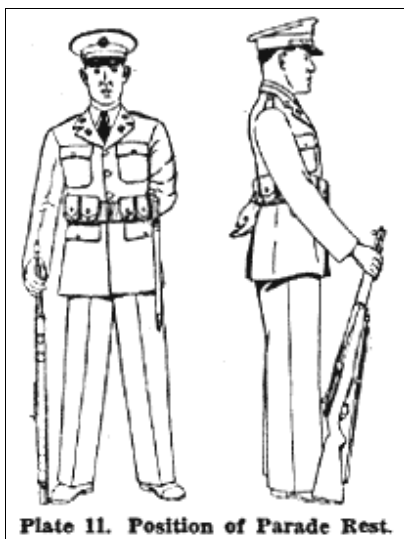


86. BEING AT ORDER GUIDON, EXECUTE CARRY GUIDON. - Grasp the lance with the left hand at the same time loosening the grip of the right hand on the lance. Raise the guidon vertically with the left hand, the lance sliding through the right hand until the ferrule is 6 inches from the ground, then regrasp the lance with the right hand. Cut the left hand away smartly to the left side.

87. BEING AT CARRY GUIDON, EXECUTE ORDER GUIDON. - Allow the lance to slide through the right hand until the ferrule is on the ground on line with and touching the toe of the right shoe, right hand grasping the lance as in the *CARRY*.

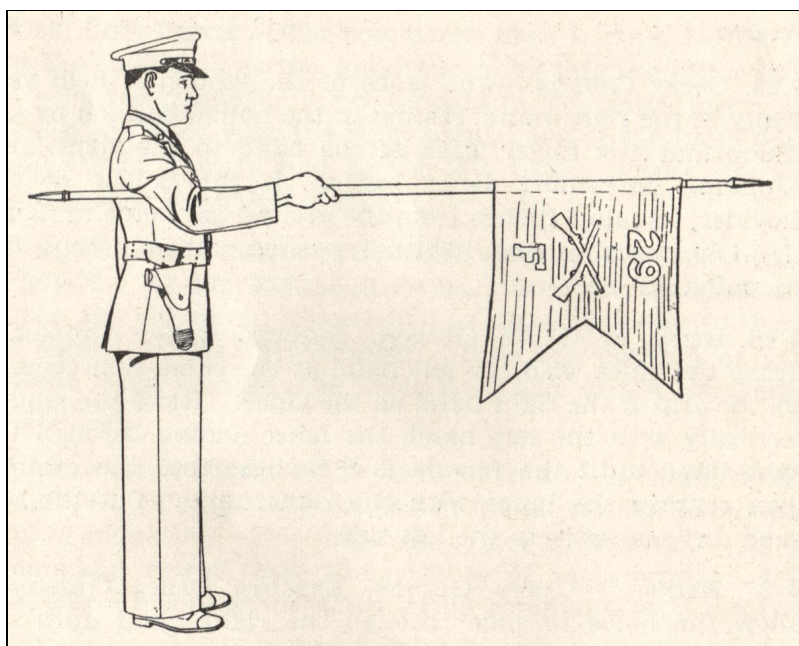


88. BEING AT ORDER GUIDON, EXECUTE PARADE REST. - Execute in a manner similar to PARADE REST with the rifle.



MANUAL OF ARMS FOR RIFLE
Paragraph 49.

89. BEING AT CARRY or ORDER GUIDON, EXECUTE PRESENT GUIDON. -
- Lower the guidon straight to the front, extending the right arm nearly horizontal until the lance, resting in the pit of the right arm, is horizontal. This movement is executed at the command of execution, *ARMS*, of 1. *PRESENT*, 2. *ARMS*.
 - In passing in review the guidon bearer executes *EYES RIGHT* and *PRESENT GUIDON* at the second movement of the company commander's saber salute (or at the first movement of his hand salute) and returns to *FRONT* and *CARRY GUIDON* at the last movement of the company commander's salute.



90. BEING AT PRESENT GUIDON, EXECUTE CARRY GUIDON. - Grasp the lance with the left hand, palm up, at a point just beyond the right hand. With the left hand carry the guidon up and back to the position of *CARRY GUIDON* as shown in figure on top, at the same time the right hand, retaining its grasp on the lance, is lowered to the right side. Cut the left hand away smartly to the left side.

91. BEING AT PRESENT GUIDON, EXECUTE ORDER GUIDON. - The manual is executed as prescribed in paragraph 90 except that when the guidon is brought to the vertical position, the lance is allowed, if necessary, to slide through the right hand, the left hand steadying the lance, until the guidon is in the position of *ORDER GUIDON* as shown in the figure in the middle.

92. INDIVIDUAL SALUTE BY GUIDON BEARER. - At the *CARRY* or *ORDER*, the salute is given with the left hand in the same manner as a rifle salute at order arms.

93. DOUBLE TIME. - At double time, the guidon is held diagonally across the body, the right hand grasping the lance at the position used at the *CARRY*, right forearm horizontal, elbow near the body, left hand grasping the lance opposite the junction of the neck and left shoulder.